



NEW AGE
— METALS INC. —

At the Forefront of Critical and Precious
Metals Exploration

www.NewAgeMetals.com



TSXV: **NAM**



OTCQB: **NMTLF**



FSE: **P7J**

PALLADIUM
PLATINUM
RHODIUM

GOLD
COPPER
ANTIMONY
SILVER

LITHIUM
CESIUM
TANTALUM



Strategic Shareholder

- Eric Sprott one of the **world's best known mining financiers** and owns **~30%**

Core Asset Divisions

- **Flagship PGM – River Valley (Ontario)**
 - 100% owned, multi-million-ounce Pd–Pt–Rh–Cu–Au district
 - ~60 road miles from Sudbury, North America's largest metallurgical complex
 - 2026 Program includes 3D IP Geophysical survey to generate high-priority drill targets
 - **PLATSOL studies to increase metallurgical recoveries**
- **Genesis Cu–Ni–PGM (Alaska)**
 - 100% owned, road-accessible, drill-ready
 - Aggressive acquisition strategy underway
- **~14.39% equity** interest in MetalQuest Mining Inc. (Lac Otelnuik/Superior Iron/Ring of Fire)
- **Gold & Critical metals – Bonanza Project, Kenora (Q4-2025)**
 - District-scale gold project with high-grade historic workings
 - Aggressive regional consolidation strategy underway
- **Gold–Antimony – Newfoundland (Q1-2025)**
 - 11 projects in a top-tier mining jurisdiction
 - High-grade gold and critical antimony focus
 - Aggressive acquisition strategy underway
- **Northern Shield – Ring of Fire, Ontario (Q1-2026)**
 - Acquisition of Northern Shield on January 21, ~20,000 hectares secured via staking over a proven layered mafic complex prospective for PGM mineralization
 - Provincial, federal government and First Nation support accelerating development of an all-season access road
- **Lithium – Manitoba (JV with MRL)**
 - 100% NAM ownership via Lithium Canada Development
 - ~\$10M spent to date
- **Thunder Bay PGM–Ni–Cu (Ontario)**
 - Early-stage, road-accessible PGM–Ni–Cu assets in a proven mining camp near Lac des Iles, offering low-cost exploration upside and pipeline growth potential



DIVERSIFIED PORTFOLIO, **CRITICAL METAL** FOCUS



PLATINUM GROUP METALS DIVISION

RIVER VALLEY PALLADIUM PROJECT

SUDBURY REGION, ONTARIO, CAN



GENESIS PGM-COPPER-NICKEL PROPERTY

ALASKA, USA

Northern Shield PGM-Copper-Nickel Project

RING OF FIRE, ONTARIO, CAN

NEWFOUNDLAND DIVISION

CRITICAL METALS – GOLD AND ANTIMONY

NEWFOUNDLAND AND LABRADOR, CAN



LITHIUM/CRITICAL METALS DIVISION

LITHIUM/TANATALUM CESIUM/ BERYLLIUM
MANITOBA, CAN



ONTARIO GOLD DIVISION

BONANZA GOLD PROJECT

KENORA MINING DISTRICT, ONTARIO
25 KM SOUTH EAST OF KENORA

DOUBLE R PROJECT

KENORA MINING DISTRICT, ONTARIO
RAINY RIVER GREEN STONE BELT



New Age Metals CORPORATE OVERVIEW



CAPITAL STRUCTURE

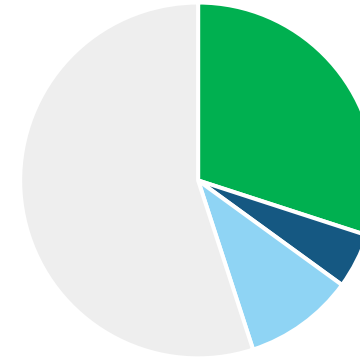
73,006,494	ISSUED & OUTSTANDING
5,499,166	OPTIONS
9,150,052	WARRANTS
87,655,713	FULLY DILUTED

APPROX. \$23.4M	MARKET CAP (CAD)
\$0.32	SHARE PRICE ¹

Analyst Coverage



Siddharth Rajeev, B.Tech, MBA, CFA
ResearchFRC.com



SHAREHOLDERS

- ERIC SPROTT (~30%)
- MANAGEMENT (~5%)
- INSTITUTIONAL (~10%)
- RETAIL (~55%) ²

CASH + Marketable Securities

May 2026

~\$5,000,000
NO DEBT



TSXV: **NAM**



OTCQB: **NMTLF**



FSE: **P7J**

¹ as of May 25, 2026

² approx. 7,000 shareholders

BOARD OF DIRECTORS



HARRY BARR

CHAIRMAN & CEO

Founder, Chairman and CEO of International Metals Group

30+ years of experience in the mining industry, focus on acquisition, finance and development of mineral projects on international scale

Oversaw over 300 option/joint venture agreements with major, mid-tier, and junior mining companies

CURT FREEMAN

DIRECTOR

Mr. Freeman is a U.S. Certified Professional Geologist and a licensed geologist in the State of Alaska as well as a member of several professional organizations.

Since forming Avalon Development in 1985, Curt and his crews have conducted mineral exploration all over Alaska as well as in the Yukon, the western United States, Central America, South America, New Zealand and Africa.

COLIN BIRD

DIRECTOR

30+ years of international experience in developing, financing, operating and managing nickel, copper, gold and coal mines

A UK-chartered mining engineer

Currently serving as Non-Executive Chairman of Jubilee Metals Group, Executive Chairman of Xtract Resources, Galileo Resources, Bezant Resources and Tiger Royalties and Investments

RON HIEBER

DIRECTOR

Former head of worldwide exploration for Anglo Platinum

Internationally recognized expert in Platinum Group Metals

Geology graduate of Rhodes University, South Africa; PGM Specialist

CHRIS BERLET

DIRECTOR

Currently serving as the President & CEO, Director of Canuc Resources, and Stakeholder Gold Corp.

30 years of experience in both finance and the mineral industries

Graduate of Mining Engineering from Queen's University (Canada); Diploma in Accounting & Finance from London School of Economics and Political Science (UK); CFA Charter Holder (USA)

NEW AGE METALS **Senior Management Team**



HARRY BARR

CHAIRMAN & CEO

ROBERT GUANZON

CHIEF FINANCIAL OFFICER

CHARLOTTE BROWN

CORPORATE SECRETARY

RON HEIBER

LEAD DIRECTOR, PGM SPECIALIST

RICHARD ZEMOROZ

SENIOR PROJECT GEOLOGIST

MAX KACZMER P. Geo.

SENIOR GEOSCIENCE CONSULTANT

FARID MAMMADOV, CPIR

VICE PRESIDENT, INVESTOR RELATIONS

WILLIAM STONE, Ph.D., P. Geo.

LEAD CONSULTING GEOSCIENTIST, PGM, NI-CU
AND AU SPECIALIST

CURT FREEMAN

LEAD DIRECTOR, ALASKA GEOSCIENCE EXPERT

ALI HASSANALIZADEH, M.Sc., P. Geo., MBA

ADVISORY BOARD, CONSULTING GEOLOGIST

PAUL POGGIONE, CIM

STRATEGIC DEVELOPMENT

AXIOM EXPLORATION,

MULTI DISCIPLINARY CONSULTING GROUP

GORDON CHUNNETT, B.Sc.

PGM SPECIALIST, ADVISOR

RIVER VALLEY PROJECT OVERVIEW

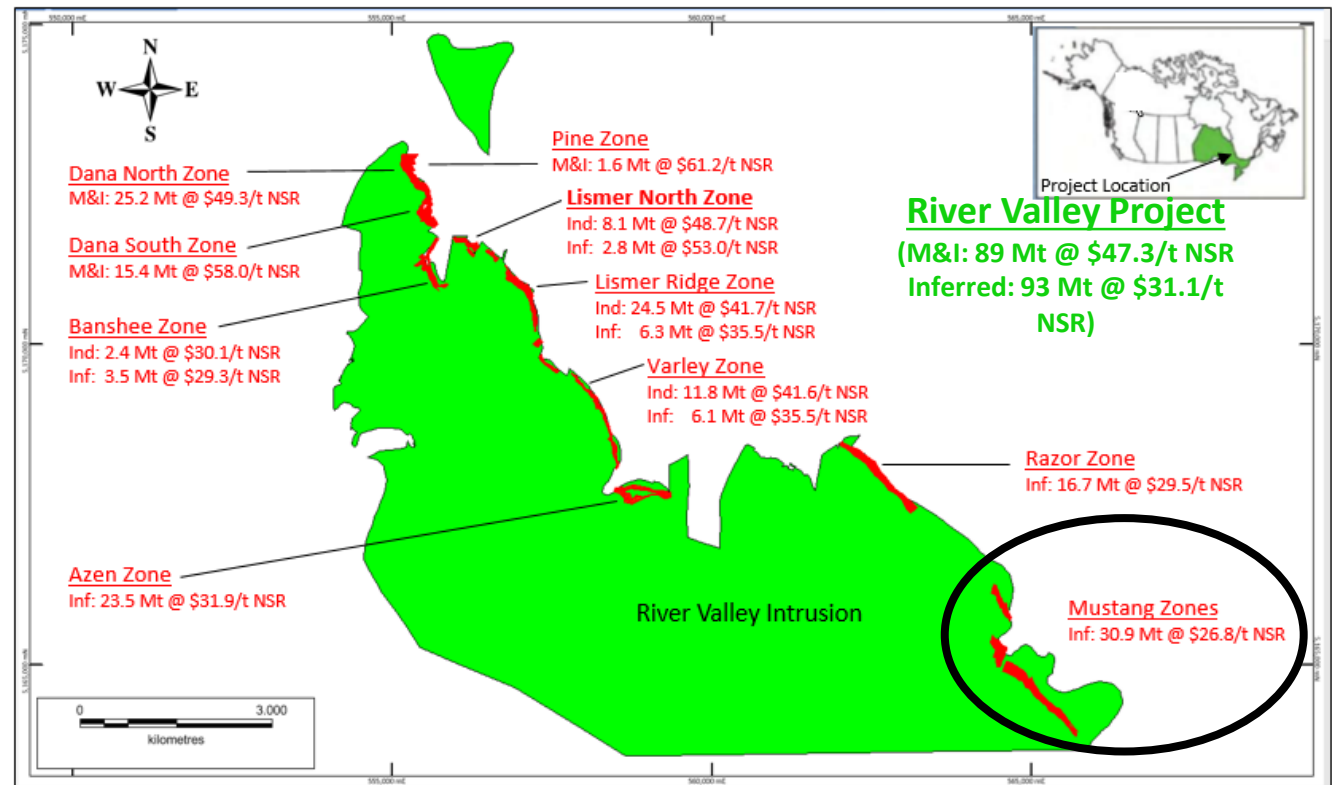
ONE OF NORTH AMERICA'S LARGEST STAND ALONE
PALLADIUM/PLATINUM/COPPER DEPOSITS

Primary Metals:	Pd, Pt, Cu (<i>Primary PGM Deposit</i>)
Project Stage:	PEA completed summer 2023
Location:	near City of Sudbury, Ontario
Mineral Resources:	2.25 Moz Pd+Pt+Au (M+I) & 1.7 Moz (Inf.) (updated October, 2021)
Land Position:	107 km ² ; (includes 2 Mining Leases)
Diamond Drilling:	733 holes totalling >155,00 metres
Ownership:	100% NAM (subject to 3% NSR)

UPCOMING MILESTONES

- Preliminary Economic Assessment/Resource Calculations completed
- **Phase 2 PLATSOL leaching test work program underway, results expected by year end**
- 2026 Geophysics Program Completed on Mustang Zone/Southern Extension of RV Project/Drill Program in planning
- Major drill programs and follow-up on PEA recommendations slated for Fall 2026/2027

DEVELOPMENT STAGE PGM PROJECT WITH MAJOR EXPLORATION UPSIDE
16 KM/10 MILES OF MINERALIZATION



Mineralized zones of the River Valley Palladium Project, 100KM/60 Road Miles from the Sudbury Metallurgical Complex. Long term First Nations Agreements.

2021 UPDATED MINERAL RESOURCE ESTIMATE RESULTS



At cut-offs of CDN\$15/t NSR (pit constrained) and CDN\$50/t NSR (out-of-pit), the 2021 Updated Mineral Resource Estimate consists of:

- 89.9 Mt grading 0.54 g/t Pd, 0.21 g/t Pt, 0.04 g/t Au and 0.06% Cu, or CDN\$47.58/t NSR in the **Measured and Indicated** classifications; and
- 94.0 Mt grading 0.35 g/t Pd, 0.16 g/t Pt, 0.04 g/t Au and 0.06% Cu, or CDN\$31.69/t NSR in the **Inferred** classification.

Contained Metal Contents at CDN\$15/t Cut-Off



1,568,300 oz
PALLADIUM M+I¹

1,073,700 oz
INFERRED



606,400 oz
PLATINUM M+I

480,600 oz
INFERRED



106,700 oz
GOLD M+I

94,200 oz
INFERRED



114.7 Mlbs
COPPER M+I

88.1 Mlbs
INFERRED



53,800 oz
RHODIUM M+I

43,700 oz
INFERRED



759,800 oz
SILVER M+I

756,000 oz
INFERRED

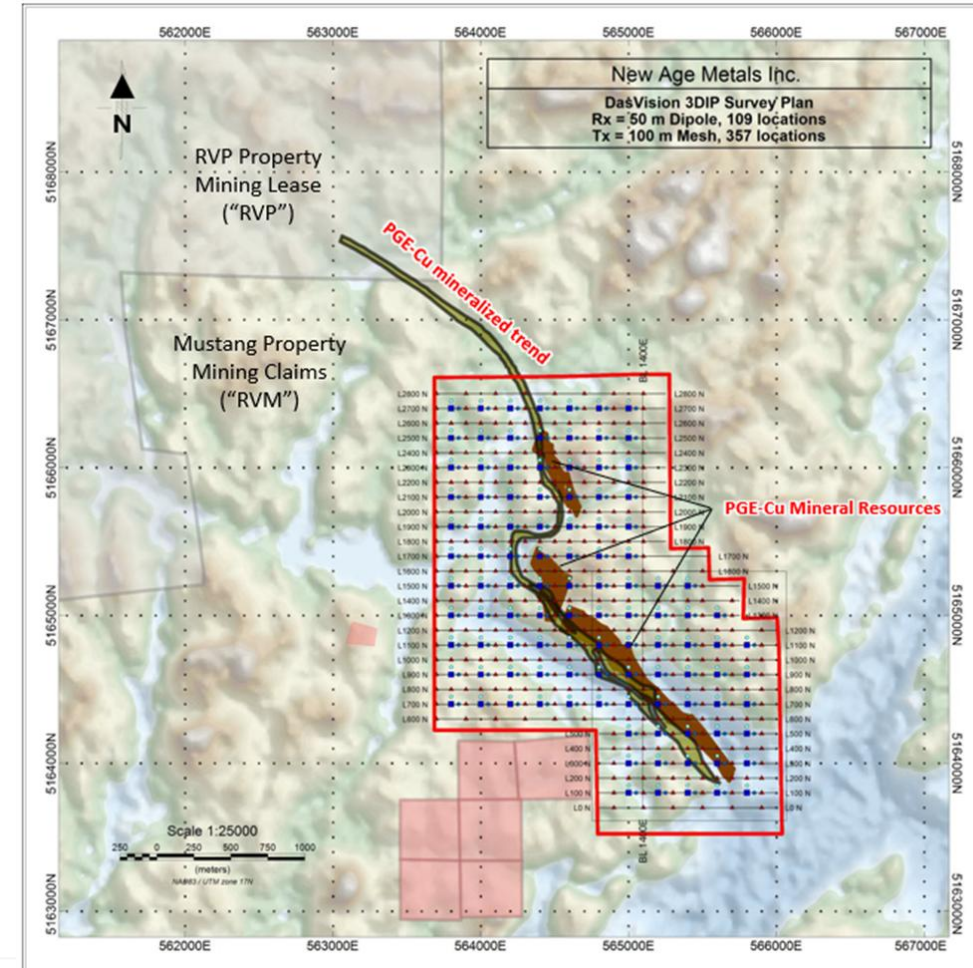
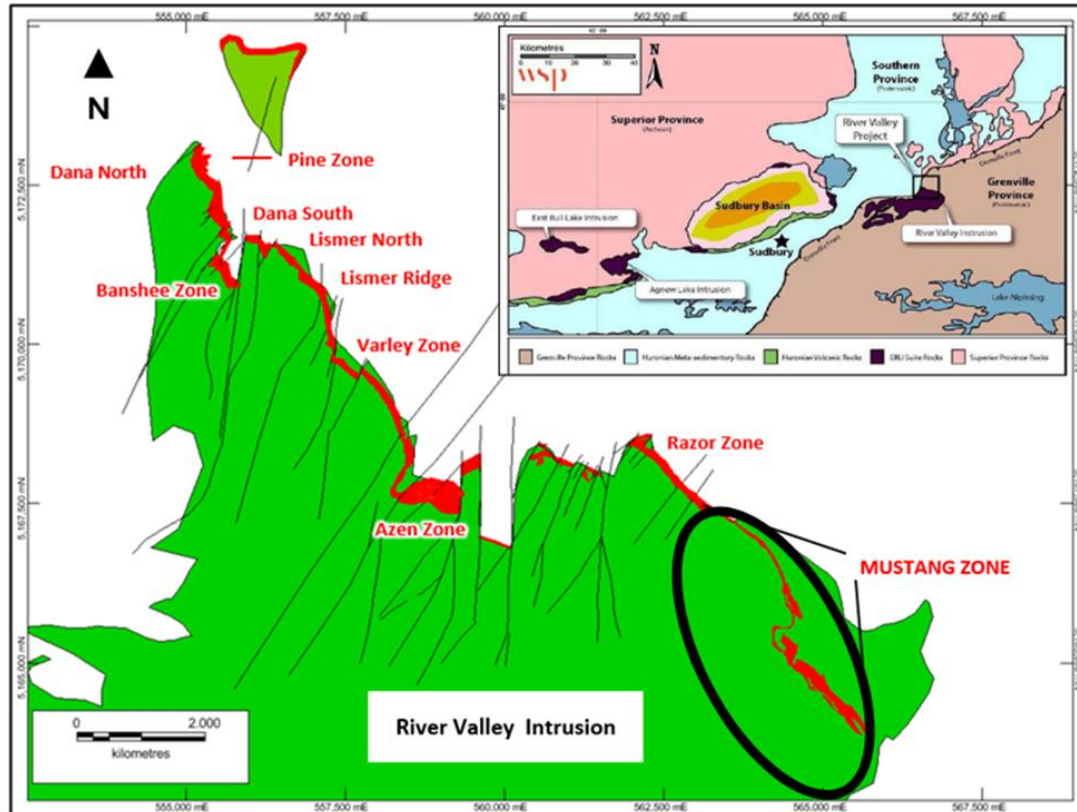
¹ M+I = Measured + Indicated classifications

*see Appendix (slide 36) for full results summary and NSR calculations

On-going Work



Feb 2026: New Age Metals Inc. initiated its 2026 PGM exploration program at the 100%-owned River Valley Project, commencing a DasVision 3D Induced Polarization (IP) survey over the 4.5 km long Mustang Zone to delineate high-priority drill targets aimed at resource upgrading and expansion.



PLATSOL™: What is it?

- SGS is a global leader in independent testing, inspection, and certification, operating major labs and technical services across industries.
- High-pressure high-temperature acid leach and solvent extraction technique
- Optimized for PGM recovery from low-grade, polymetallic sulphide concentrates, like RVP
- PGM and Cu recoveries $\geq 90\%$ in laboratory test work on PGM-bearing concentrates from elsewhere
- High-value, direct to refinery product
- No smelter, reduced transport costs
- Technology proven at laboratory scale, but not yet scaled-up to commercial operation



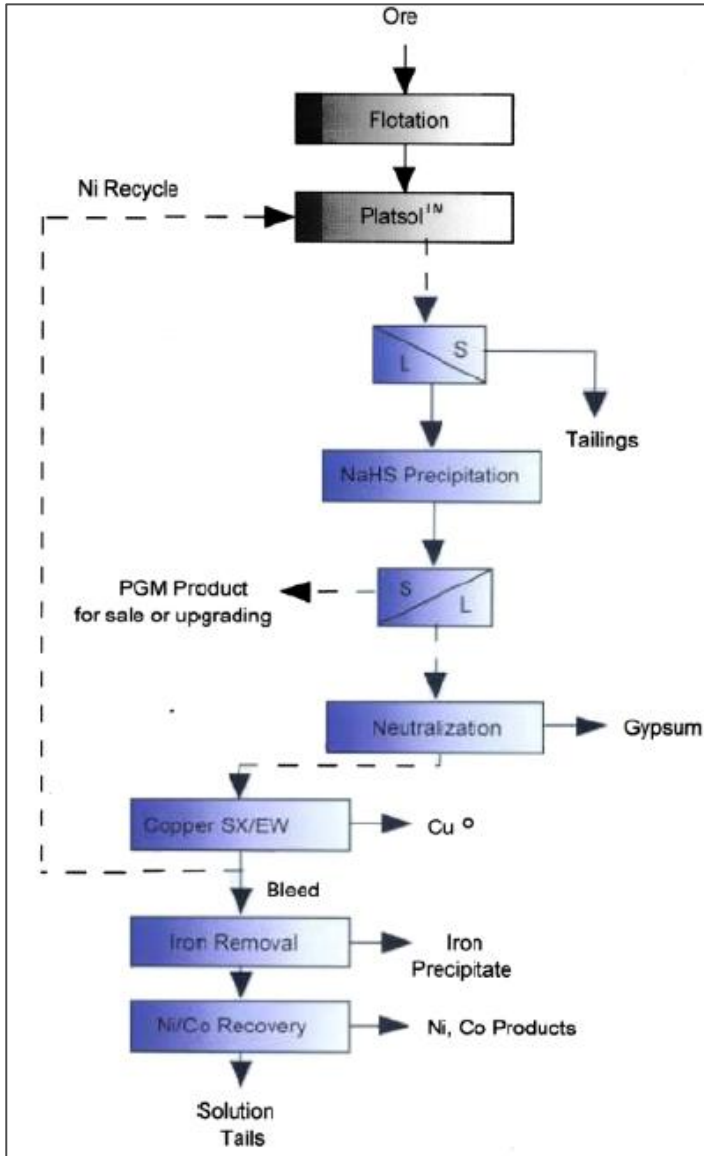
CCD circuit used to do solid liquid separation after pilot-scale leaching.

Source: **SGS Mineral Services.**

PLATSOL™ process provides a viable alternative to smelting.



Conceptual Plant (Outotec)



Conceptual flowsheet for gold, PGM and base metal recovery from sulphide concentrate.

Genesis Project

PGM-Copper-Nickel

Road accessible drill-ready critical metal project



MINERALIZATION IS OPEN TO THE WEST, EAST, NORTH AND AT DEPTH



ALL SEASON PAVED RICHARDSON HWY



HIGH CAPACITY ELECTRIC POWER LINE



STRATEGIC PARTNERSHIP WITH ROCKPORT CAPITAL TO ADVANCE PROJECT



3 KM FROM HIGHWAY & ELECTRIC TRANSMISSION LINE



KNOWN PGM-Cu-Ni MINERALIZATION COVERS 9 KM.

AUG 2026 PROGRAM/PROSPECTING/SOIL SAMPLING OBJECTIVE TO OUTLINE DRILL READY TARGETS



PREVIOUS SAMPLING PGM-Cu-Ni REEF STYLE TARGET: 2.4 G/T PD, 2.4 G/T PT, 0.96% NI AND 0.58% CU IN SURFACE GRAB SAMPLES

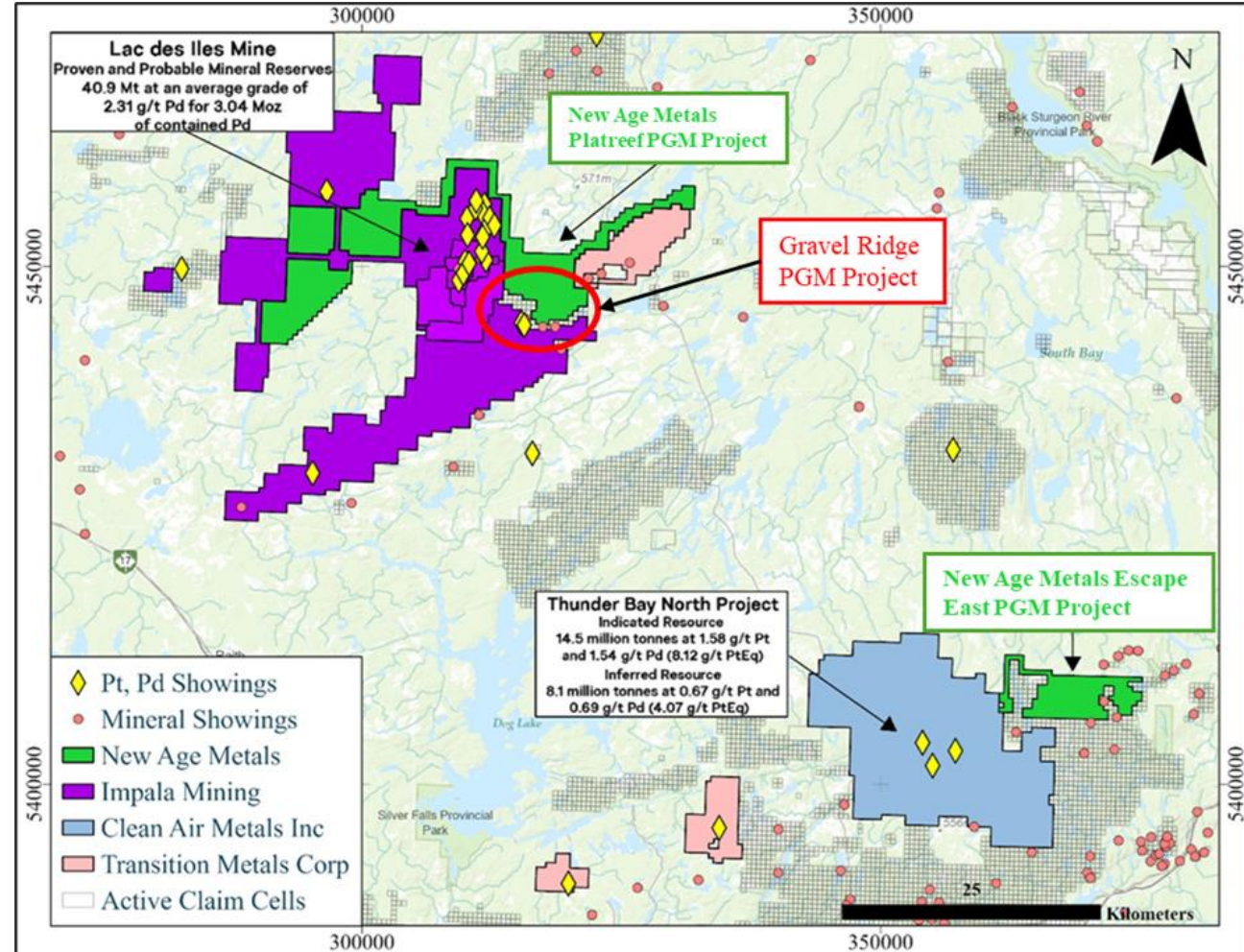
TARGET AREAS HAVE NEVER BEEN DRILLED

Thunder Bay PGM–Ni–Cu Projects

Platreef PGM Project and Escape East PGM Project

Two PGM–Ni–Cu exploration projects acquired by staking in Northwestern Ontario

- Projects provide further pipeline exposure to **palladium, platinum, nickel, and copper** within **mafic–ultramafic intrusive geological settings**
- **Proximal to Thunder Bay**, a regional mining and logistics hub with access to skilled workforce, infrastructure, and service providers
- **Road-accessible properties**, supporting cost-effective exploration relative to remote projects
- Located within **established PGM mining districts, adjacent to Impala’s Lac Des Iles Mine and Clean Air’s Deposit Resources**
- **Historical exploration completed**, including geophysics, prospecting, trenching, and drilling, providing a foundation for follow-up work
- **Multiple untested or under-tested magnetic and intrusive targets** identified across both properties
- Straightforward low-cost exploration strategy prior to drilling



Why the Ring of Fire?



Prime Minister Mark Carney and Ontario Premier Doug Ford.

Premier Ford says the agreement is the last one needed to launch construction on the Ring of Fire. He predicts shovels will be in the ground in June 2026, “as soon as the ground thaws, three whole years ahead of schedule.”

Source; <https://ontarioconstructionnews.com/ford-predicts-shovels-in-the-ground-by-june-as-ontario-and-canada-move-forward-on-ring-of-fire>

Major cycle resets create mispriced assets: large projects can stall for years due to infrastructure + permitting complexity

Cliffs example (reset moment): in 2015, Cliffs sold its Ring of Fire chromite assets to Noront for US\$20M — a clear “distressed-value” entry point for the next owner

Wyloo example (re-rating moment): Wyloo completed its acquisition of Noront in 2022, signaling renewed long-term conviction in the district

Policy tailwind strengthens the “why now”: governments are actively moving to streamline approvals for key infrastructure (incl. the Ring of Fire road)

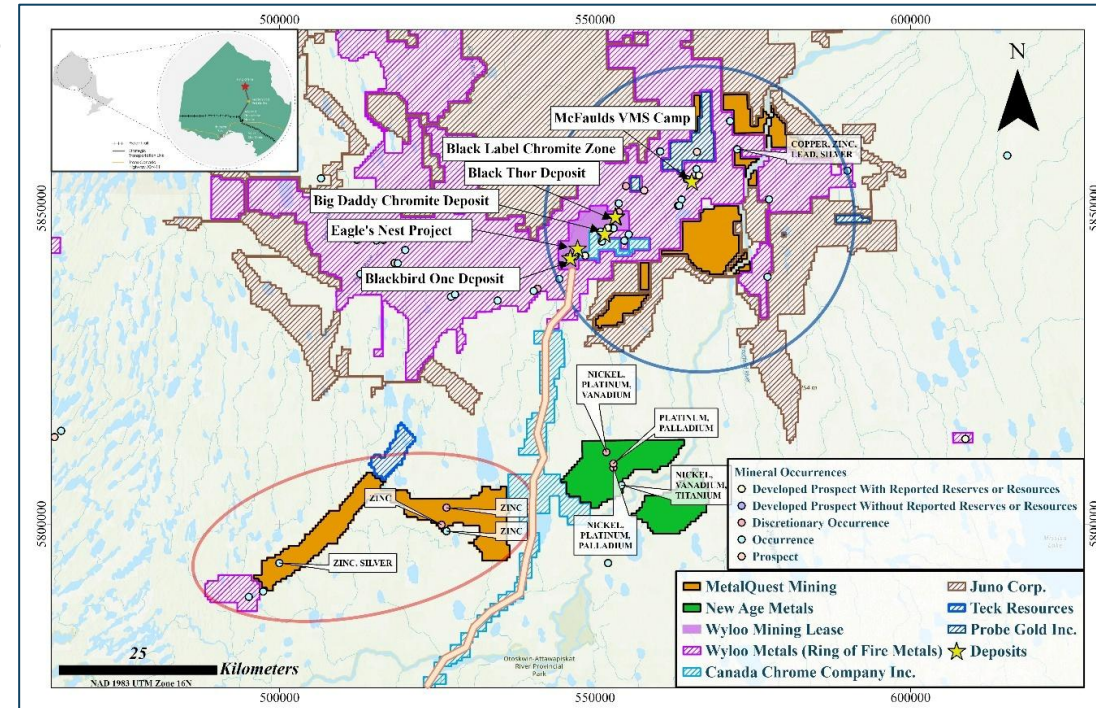
What this means for NAM: NAM aims to enter early, when valuations are still “pre-infrastructure,” to secure district-scale optionality at low cost (before the next capital wave)

Harry Barr, CEO NAM states, “As Chairman and CEO, **our stated corporate objective is to become one of the largest project exploration and developing companies in the Ring of Fire region.** Over my career, our Board of Directors, and our technical and financial teams have consistently delivered on this objective across multiple international jurisdictions, and we intend to do the same here..”

NAM's Northern Shield PGM-Cu-Ni Project in Ontario's Ring of Fire Region



- 100% owned (staked) — **no option payments or earn-in obligations**
- Located in **Ontario's Ring of Fire**, a highly prospective emerging critical minerals district ~34,000 ha (84,000 acres) covering a large intrusive complex prospective for PGM-Cu-Ni
- **Strong historical database:** airborne & ground geophysics, soils, mapping + >7,000 m drilling
- Mineralized system **confirmed with PGM reef-style horizons** and net-textured sulphides
- **Multiple priority targets identified** — largely untested along strike and at depth
- Drill-ready targets outlined by previous operators — **clear follow-up potential**
- Work underway: data compilation + grassroots programs to refine targets ahead of drilling and fall geophysical program
- District momentum strengthening with **Ontario road-corridor construction targeted for Summer 2026**



Location map of the Northern Shield claim blocks showing proximity to the proposed Ring of Fire access road (orange line) and selected regional PGM, VMS, and chromite deposits shown for regional context only.

Harry Barr, CEO New Age Metals states, “Northern Shield is exactly the type of opportunity we look for at New Age Metals. **The property was acquired at very low cost through staking, yet benefits from extensive historical exploration, including drilling that confirmed PGM-bearing, base metals, and vanadium (polymetallic) reef horizons and sulphide mineralization**

Antimony – A Critical Mineral

- **Primary Producer – China – Antimony rare in North America**
- Major use in ballistics/steel hardening and Defense applications
- **High demand due to global conflicts and China supply constraints**

Overview

- NAM acquired **765 mineral claims totaling 20,950 hectares** of crown land across 12 non-contiguous properties in Newfoundland

Phase 1 and 2 Highlights

- **High-grade samples:** up to **17% Antimony, 1.5 g/t Gold, 131 g/t Silver, 29.3% Lead (Updated assays pending release)**
- **Multiple discoveries made in 1st season:** Established a ~10 km Antimony/Gold trend
- Confirmed **multi-commodity potential (Ag-Pb-Zn-Cu)** across NAM’s southern St. Alban’s properties

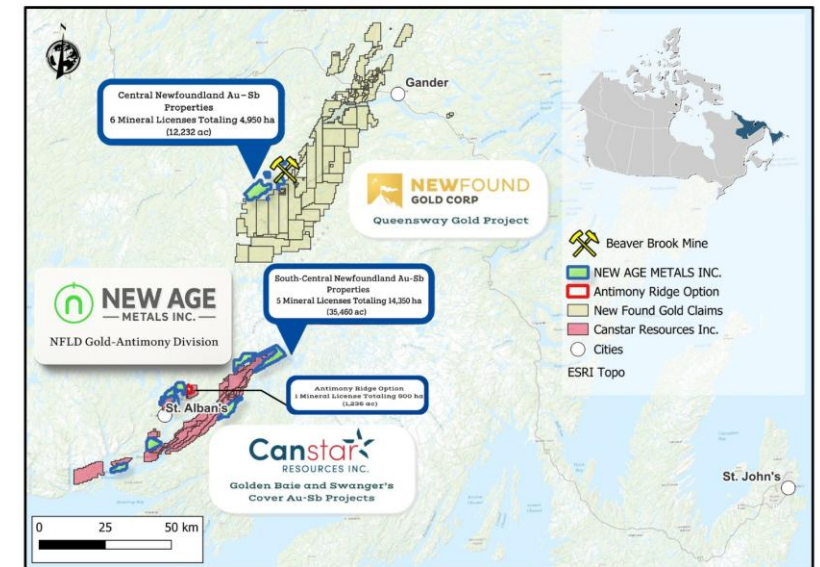
Go-Forward Plan

- **Targeted follow-up exploration is now underway, focused on advancing Phase 1 and 2 surface discoveries**
- Two full time experienced NFLB Prospectors working on various exploration activities
- Geophysical program just completed on Central Newfoundland Properties – results pending
- **Objective to add several new drill targets for Winter 2027 drilling**
- Historic price levels for Gold/Antimony market fundamentals remain strong



High-grade angular stibnite float sample 445127 from the Antimony Ridge

Phase 2 exploration returned high-grade results, including assays of up to 51.9% antimony (Sb) and 46.2 g/t gold (Au)



Newfoundland Gold-Antimony Properties

High-level summary of recent deals in the Kenora Mining District

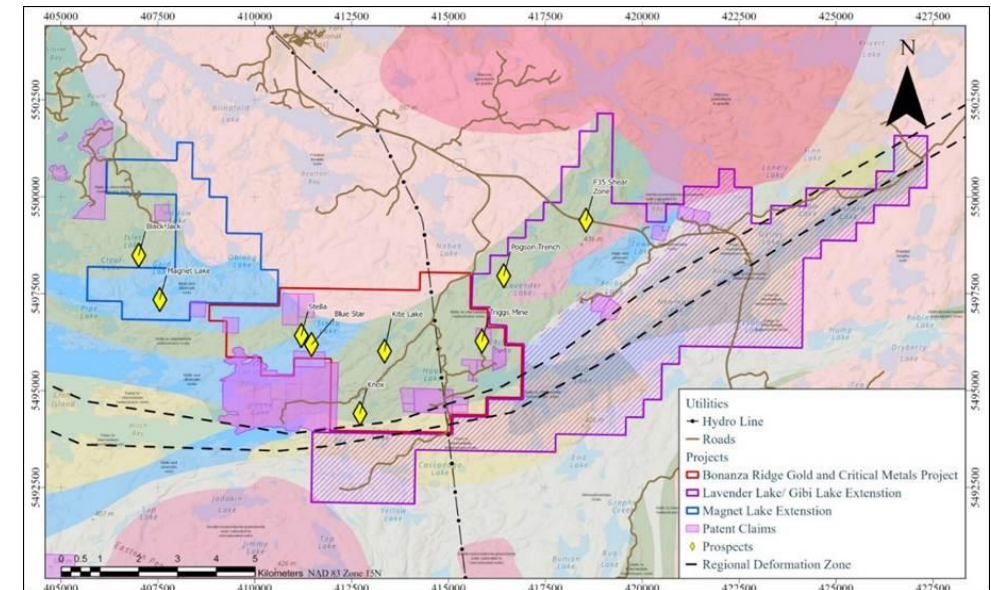


- **Kenorland–Centerra (2025):** Centerra can earn 70% of Flora/W. Wabigoon/Algoman by spending C\$10M for 51% (incl. C\$3.5M Y1 + 10 km drilling) and completing a 1 Moz AuEq PEA for the remaining 19%.
- **Coeur Mining (2026):** Coeur Mining announced it will acquire New Gold (which includes the Rainy River mine) in an all-stock deal valued at ~US\$7B, expected to close in the first half of 2026 (subject to approvals).
- **Cameron (2025):** First Mining sells to Oronova/Seva for C\$27M (C\$5M cash + 80M shares + ≥C\$2M stockpile payment); Seva formed with First Mining retaining ~48%.

Bonanza Ridge Gold and Critical Metals Project: Kenora Mining District



- **Aggressively consolidating District Scale Concept**
- Multiple high-grade mineral occurrences of gold at surface including Select due diligence surface grab sample assays:
1.1 g/t Au, 3.7 g/t Au, 8.9 g/t Au, 13.2 g/t Au, 22.2 g/t Au, **31.9 g/t Au** and up to **127 g/t Au** from five prospects on the Project;
- Excellent infrastructure, including road access to all areas to the Project and provincial grid power lines;
- Location 25 km southeast of City of Kenora, a major northwestern Ontario economic hub with a population of ~14,800;
- Lack of modern-day exploration; and Drill-ready with 3-year permits in place.



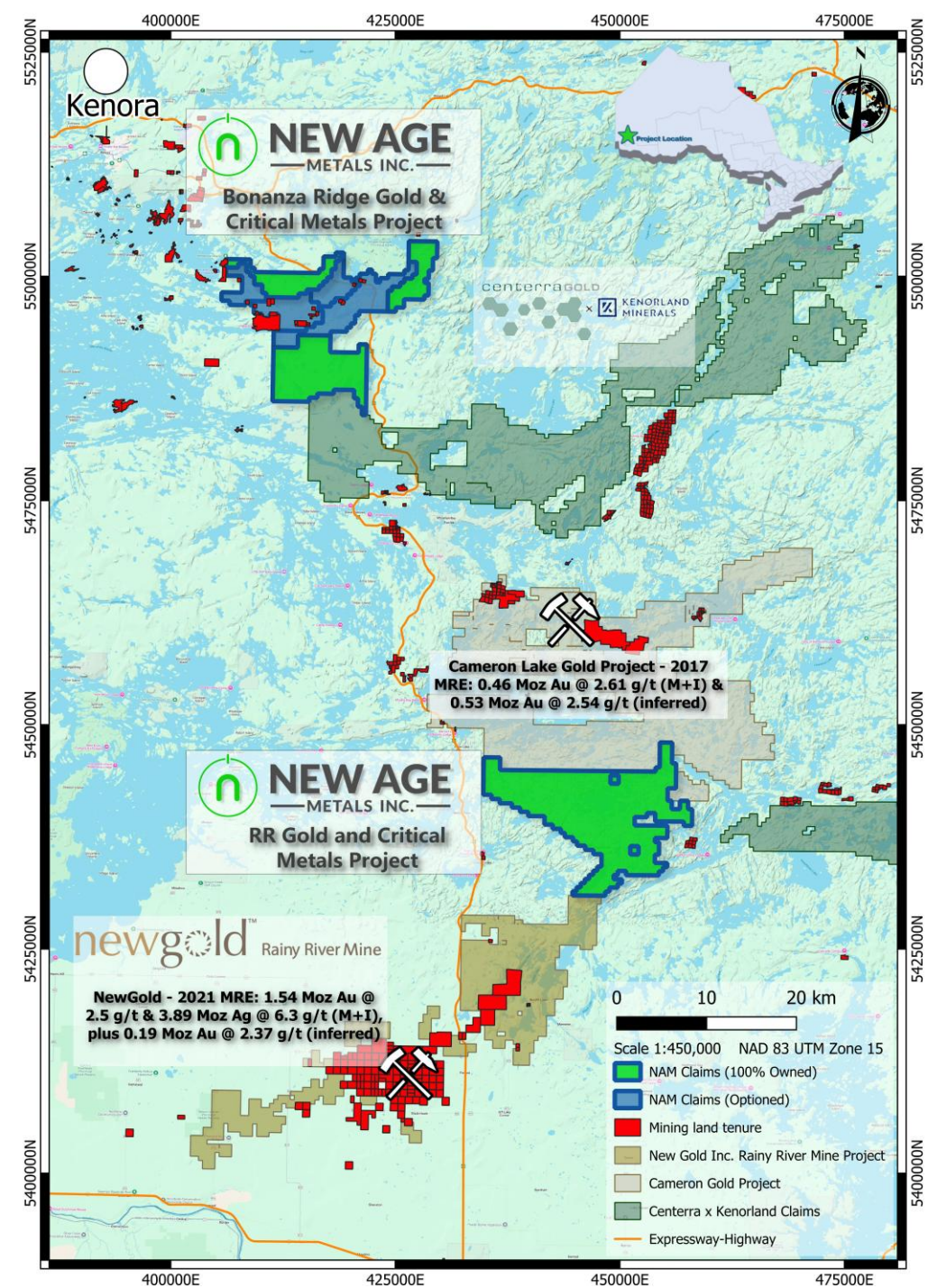
Golden Acquisitions: Kenora Mining District

Double RR Gold Project Acquisition

- **District-scale land position totaling 17,620 hectares** in the Rainy River–Kenora gold district
- Located approximately **35 km northwest of the Rainy River Gold Mine (~2.2M ounce Au in reserve 2024)** and **~17 km south of the Cameron Lake gold deposit (>1M ounce Au)**
- **Historical OGS till sampling** reported up to **25 gold grains** within the project area

District Transactions:

- **Coeur Mining (2026):** Coeur Mining announced it will acquire New Gold (which includes the Rainy River mine) in an all-stock deal valued at **~US\$7B**, expected to close in the first half of 2026 (subject to approvals).
- **Cameron (2025):** First Mining sells to Oronova/Seva, a Frank Giustra company, for **C\$27M** (C\$5M cash + 80M shares + ≥C\$2M stockpile payment); Seva formed with First Mining retaining ~48%.
- **Kenorland–Centerra (2025):** Centerra can earn 70% of Flora/W. Wabigoon/Algoman by spending C\$10M for 51% (incl. C\$3.5M Y1 + 10 km drilling) and completing a 1 Moz AuEq PEA for the remaining 19%.



NAM LITHIUM & RARE EARTH PROJECTS

District-Scale Lithium & Rare Metals Project

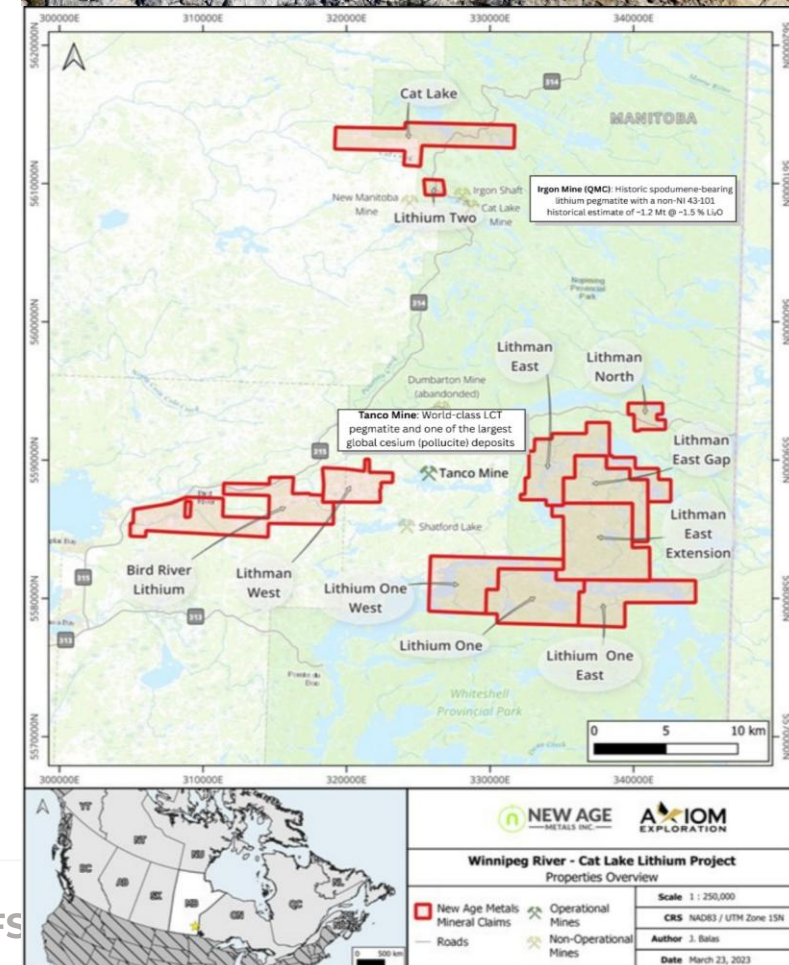
Large land position in the Winnipeg River Pegmatite Field, hosting LCT-fertile stratigraphy with **lithium and associated rare metals including tantalum, cesium, rubidium, gallium, and beryllium**, confirmed through surface and drill geochemistry.

Strategic Proximity to the World-Class Tanco Mine

Claims surround and directly flank the producing Tanco Mine, sharing Bernic Lake Group stratigraphy and key structural corridors that host long-life lithium, cesium, tantalum, and related rare-metal mineralization.

Extensively Drill-Tested, De-Risked, and Partnered

18,469.5 m of diamond drilling completed, supported by extensive surface geochemistry and multi-technique geophysics. Advanced under a JV with Mineral Resources Ltd ~\$10.5 million spent to date and strengthened by a \$1.5M NSERC Alliance grant (Apr 2024) with leading academic and industry partners.





Strategic Shareholder

- Eric Sprott one of the **world's best known mining financiers** and owns **~36%**

Core Asset Divisions

- **Flagship PGM – River Valley (Ontario)**
 - 100% owned, multi-million-ounce Pd–Pt–Rh–Cu–Au district
 - ~60 road miles from Sudbury, North America's largest metallurgical complex
 - 2026 Program includes 3D IP Geophysical survey to generate high-priority drill targets
 - PLATSOL studies to increase metallurgical recoveries
- **Genesis Cu–Ni–PGM (Alaska)**
 - 100% owned, road-accessible, drill-ready
 - Aggressive acquisition strategy underway
- **~14.39 equity** interest in MetalQuest Mining Inc. (Lac Otelnuk/Superior Iron/Ring of Fire)
- **Gold & Critical metals – Bonanza Project, Kenora (Q4-2025)**
 - District-scale gold project with high-grade historic workings
 - Aggressive regional consolidation strategy underway
- **Gold–Antimony – Newfoundland (Q1-2025)**
 - 11 projects in a top-tier mining jurisdiction
 - High-grade gold and critical antimony focus
 - Aggressive acquisition strategy underway
- **Northern Shield – Ring of Fire, Ontario (Q1-2026)**
 - Acquisition of Northern Shield on January 21, ~20,000 hectares secured via staking over a proven layered mafic complex prospective for PGM mineralization
 - Provincial, federal government and First Nation support accelerating development of an all-season access road
- **Lithium – Manitoba (JV with MRL)**
 - 100% NAM ownership via Lithium Canada Development
 - ~\$10M spent by to date
- **Thunder Bay PGM–Ni–Cu (Ontario)**
 - Early-stage, road-accessible PGM–Ni–Cu assets in a proven mining camp near Lac des Iles, offering low-cost exploration upside and pipeline growth potential