



NEW AGE — METALS INC. —

At the Forefront of Critical and Precious
Metals Exploration

New Age Metals (NAM) is a North American Company with a diversified critical and precious metals exploration and development portfolio. NAM's proven management team has over 200 years of experience in all aspects in exploration, development and finance of various critical and precious metals projects on an international scale.

NAM's flagship asset, the River Valley Palladium Project, one of North America's largest undeveloped Platinum Group Metal (PGMs) Projects located outside of the world class Mining District in Sudbury, Ontario, Canada.

4 DIVISIONS, 1 TICKER

Critical Metals = Shareholder Value



TSXV: **NAM**



OTCQB: **NMTLF**

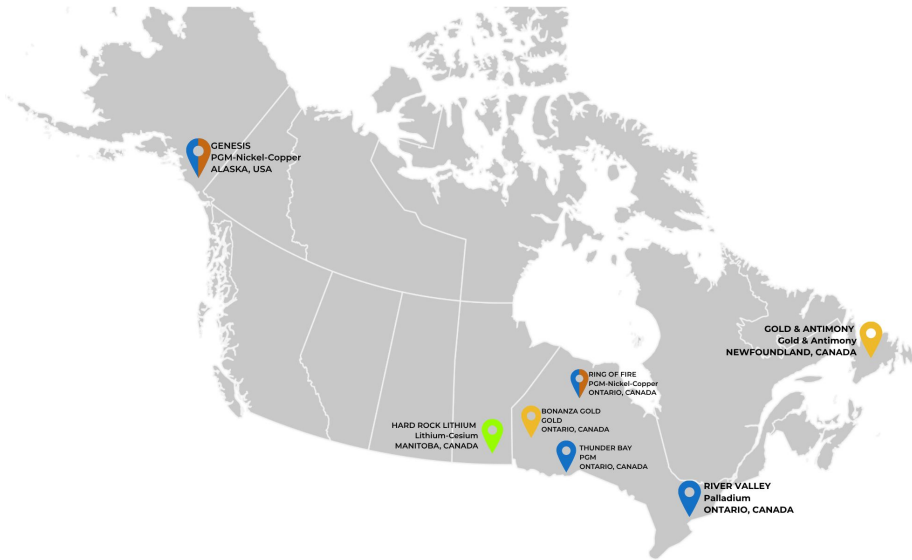


FSE: **P7J**

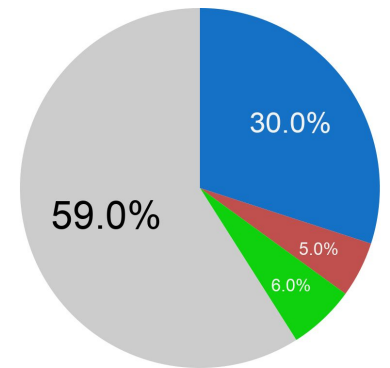
PALLADIUM PLATINUM RHODIUM	GOLD COPPER ANTIMONY SILVER	LITHIUM CESIUM TANTALUM
---	--	--

KEY FINANCIALS (CAD – May 2026)	
Share Price	\$0.32
Issued & Outstanding	73M
Options	5.27M
Warrants	9.15M
Fully Diluted	87.47M
Market Cap	~\$23.32M
Cash	~\$4.9M*
No debt	

*As of May 2026



SHAREHOLDERS



- Eric Sprott
- Management
- Institutional
- Retail (~5000)

*Values approximated

**PALLADIUM
PLATINUM
RHODIUM**

**GOLD
COPPER
ANTIMONY
SILVER**

**LITHIUM
CESIUM
TANTALUM**

**COPPER
NICKEL
ZINC**

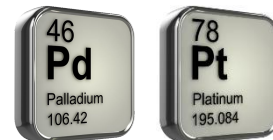
"The average guys gotta find someone that knows what they are doing and stick with them." – Eric Sprott

New Age Metals Largest Shareholder

Interview with Jimmy Connor Aug. 31 2025

Subscribe to
our monthly
newsletter





RIVER VALLEY PALLADIUM PROJECT

One of the largest undeveloped palladium projects in North America



Location

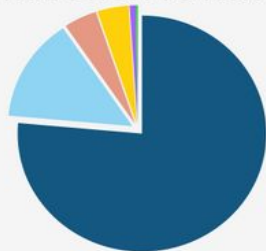
- ~100 KMs (62 Miles) NE of world class mining facilities in Sudbury, Ontario.
- ~16 KMs (9.9 Miles) of mineralization, ~26,440 acres

- 62 Miles from North Americas largest metallurgical complex in Sudbury, Ontario, Canada. **100% owned.**
- **Multi-million-ounce, district-scale asset**
- 16 KMs (9.9 Miles) mineralized trend that has **only had 40% drill-tested to date**
- Completed 2023 Preliminary Economic Assessment
- **Phase 2 PLATSOL Study recommended. Phase 1 produced +90% recovery on all metals.**
- Long standing agreements with local First Nations
- **Financed by Eric Sprott, one of the worlds best known mining financiers.**

River Valley 2021 Mineral Resource Estimate

2021 MRE METAL CONTRIBUTION TO NSR

- 74.6% Palladium
- 13.8% Platinum
- 4.2% Copper
- 4.0% Gold
- 0.8% Nickel
- 0.2% Cobalt



1.56 Moz Palladium M+I	0.61 Moz Platinum M+I
0.11 Moz Gold M+I	115 Mlbs Copper M+I
0.05 Moz Rhodium M+I	0.76 Moz Silver M+I

Genesis Project

PGM-Copper-Nickel

Road accessible drill-ready critical metal project

The project is located within 3 km of the all-season paved Richardson highway and a high-capacity electric power line

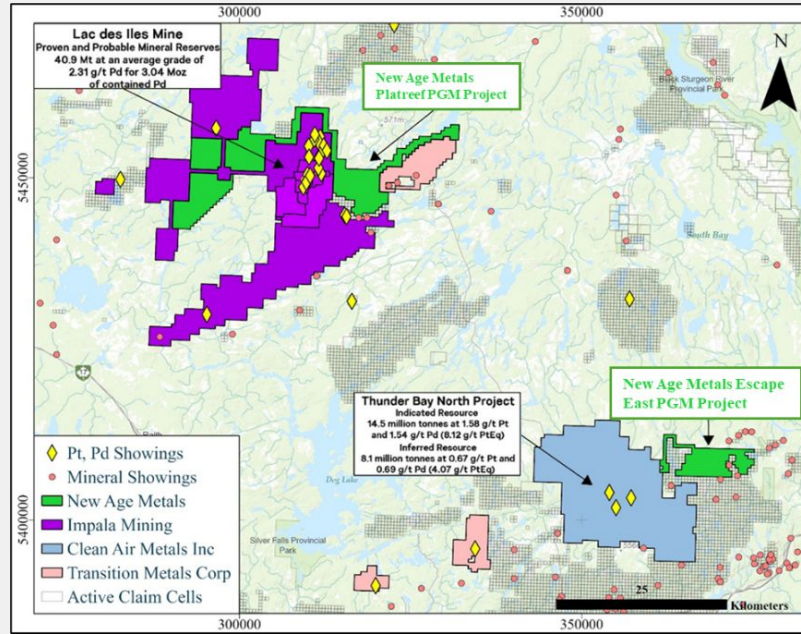


- **Strategic partnership with Rockport Capital to advance the Genesis PGM-Cu-Ni Project**
- Known PGM-copper-nickel mineralization covers 9km. All critical metals/Stable State of Alaska claims
- **Mineralization is open to the west, east, north and at depth.**
- Two separate settings of magmatic reef-style mineralization occur: chromate-hosted Platinum Group Metals (PGM) returning up to **2.4 g/t palladium (Pd) and 2.4 g/t platinum (Pt); and nickel-copper (Ni-Cu)-bearing sulphide mineralization with values up to 0.96% Ni and 0.58% Cu.**
- **Aggressive 2026 exploration plans.**
- August 2026 exploration program, boots on ground, prospecting, soil sampling, objective to outline additional drill ready targets.
- **The target areas have never been drilled.**

Thunder Bay PGM-Cu-Ni Project

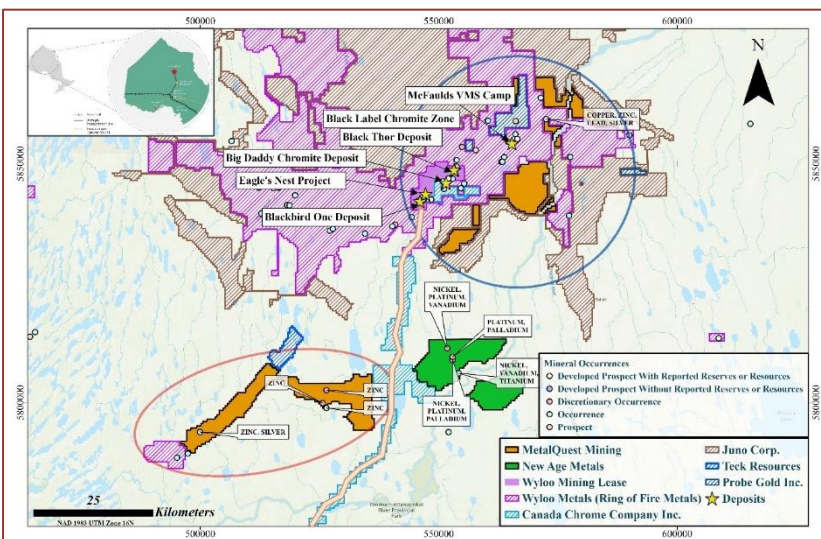
Platreef PGM Project and Escape East PGM Project

- Projects provide further pipeline exposure to **palladium, platinum, nickel, and copper** within **mafic-ultramafic intrusive geological settings**
- **Proximal to Thunder Bay**, a regional mining and logistics hub with access to skilled workforce, infrastructure, and service providers
- **Road-accessible properties**, supporting cost-effective exploration relative to remote projects
- Located within **established PGM mining districts, adjacent to Impala's Lac Des Iles Mine and Clean Air's Deposit Resources**
- **Historical exploration completed**, including geophysics, prospecting, trenching, and drilling, providing a foundation for follow-up work
- **Multiple untested or under-tested magnetic and intrusive targets** identified across both properties
- Straightforward low-cost exploration strategy prior to drilling
- **Gravel Ridge PGM Property** optioned April 2026, ~17,630 hectares (~43,565 acres) proximal to the Lac des Îles Mine.
- 2026 program funded geophysics/ground-proofing



Northern Shield PGM-Cu-Ni Project

Located in Ontario's Ring of Fire Region



Location map of the newly acquired Northern Shield claim blocks showing proximity to the proposed Ring of Fire access road (orange line) and selected regional PGM, VMS, and chromite deposits shown for regional context only.

- 100% owned, located in **Ontario's Ring of Fire**
- **Strong historical database:** airborne & ground geophysics, soils, mapping + >7,000 m drilling
- Mineralized system **confirmed with PGM reef-style horizons** and net-textured sulphides
- **Multiple priority targets identified** — largely untested along strike and at depth
- Drill-ready targets outlined by previous operators — **clear follow-up potential**
- District momentum strengthening — Ontario has released an accelerated road-corridor construction plan with the **Webequie Supply Road starting June 2026** and roads **opening by 2031, five years ahead of schedule.**
- Project expanded twice to **~34,000 hectares (84,000 acres)** following southern and northern extensions.
- Funded for 2026 geophysical programs/follow up field programs

GOLD-ANTIMONY PROJECTS

Developing one of Canada's only Antimony/Gold Projects



- Located in South-central Newfoundland between the Beaver Brook Antimony Mine, **Canada's only primary antimony producer** and the newly discovered Queensway Gold Project owned by NewFound Gold Corp. (Eric Sprott is the largest shareholder)
- **Mining friendly jurisdiction and local communities.**
- Phase 1 and Phase 2 exploration program complete.
- High-grade results: Grab samples returned up to **51.9% Sb and up to 46.2 g/t Au at Antimony Ridge.**
- Large scale geophysical/prospecting/trenching programs ongoing during the summer/fall 2026
- Multi-target 2026 drilling program set for fall 2026/winter 2027

BONANZA GOLD PROJECT

High grade gold potential from a historic mining jurisdiction



- Multiple **high-grade mineral occurrences of gold at surface**
- Excellent infrastructure, including **road access to all areas to the Project and provincial grid power lines**
- Location 25 km southeast of City of Kenora, a **major northwestern Ontario economic hub** with a population of ~14,800
- Select surface grab sample assays include **8.9 g/t Au, 13.2 g/t, 22.2 g/t, 31.9 g/t and up to 127 g/t Au from five prospects on the Project**
- **3-year exploration permits in place. Drilling slated for Q4-2026.**

Developing a district-scale **Gold Project Portfolio**
Kenora Mining District,
Northwestern Ontario

Golden Acquisitions: Kenora Mining District

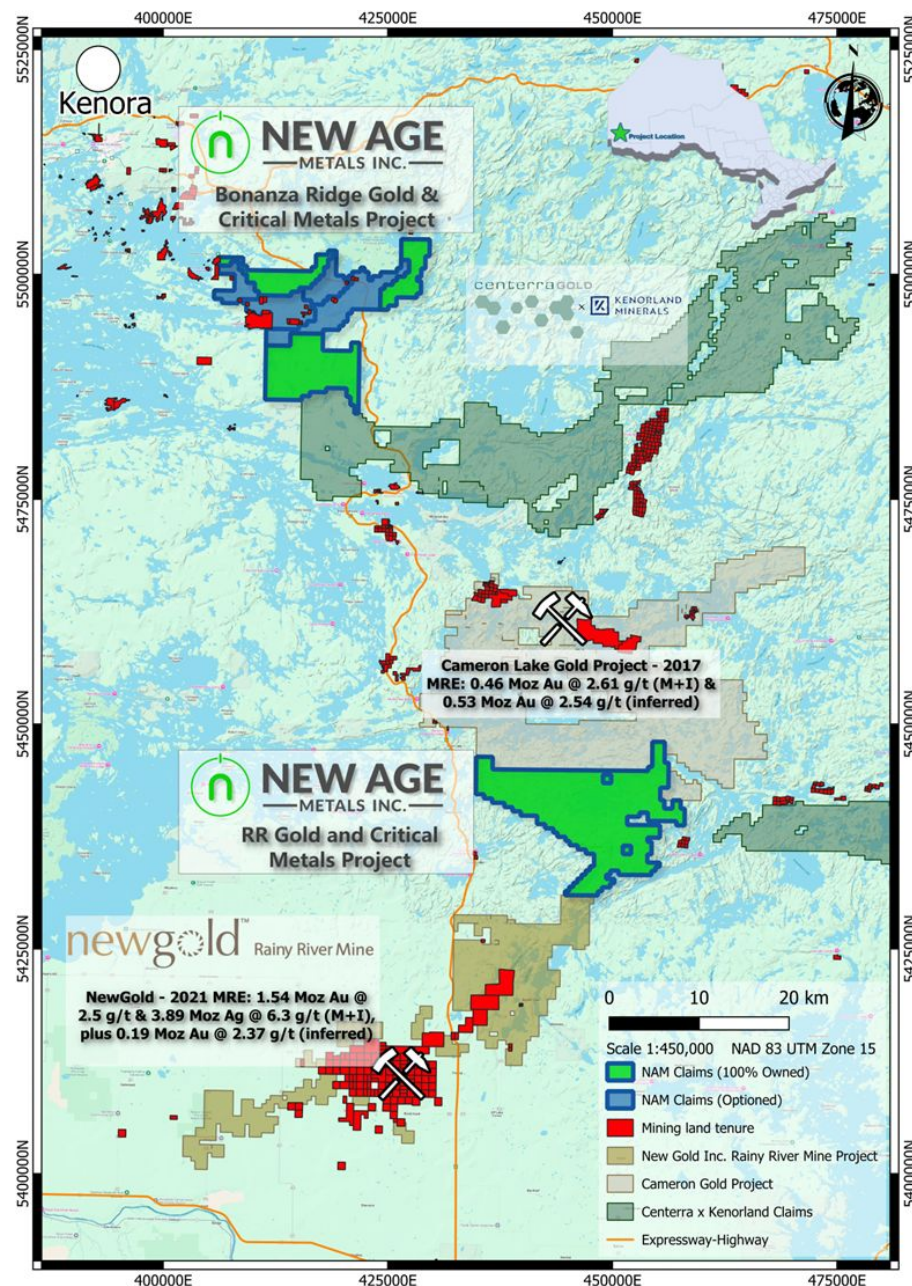
Double RR Gold Project Acquisition

- **District-scale land position** totaling **17,620 hectares** in the Rainy River–Kenora gold district
- Located approximately **35 km northwest of the Rainy River Gold Mine (~2.2M ounce Au in reserve 2024)** and **~17 km south of the Cameron Lake gold deposit (>1M ounce Au)**
- **Historical OGS till sampling** reported up to **25 gold grains** within the project area

District Transactions:

- **Coeur Mining (2026):** Coeur Mining completed its acquisition of New Gold Inc. (including the Rainy River mine) in an all-stock deal valued at ~US\$7B.
- **Cameron (2025):** First Mining sells to Oronova/Seva, a Frank Giustra company, for C\$27M (C\$5M cash + 80M shares + ≥C\$2M stockpile payment); Seva formed with First Mining retaining ~48%.
- **Kenorland–Centerra (2025):** Centerra can earn 70% of Flora/W. Wabigoon/Algoman by spending C\$10M for 51% (incl. C\$3.5M Y1 + 10 km drilling) and completing a 1 Moz AuEq PEA for the remaining 19%.

Developing a district-scale **Gold Project Portfolio** Kenora Mining District, Northwestern Ontario



LITHIUM-CESIUM DIVISION



Largest mineral claim holder in the prolific, Winnipeg River – Cat Lake Pegmatite Field.



- Largest claimholders in Winnipeg River Pegmatite field area total of **112 claims over ~21,1611 acres.**
- Portfolio of early stage, hard rock, lithium, tantalum, and cesium exploration assets in Manitoba, Canada.
- **Project in proximity to one of Canada's only lithium and cesium producing mines, the Tanco Mine.**
- 11 - 100% owned projects, over 15,000 meter of drilling complete.
- **Signed agreement with the Sagkeeng First Nation.**
- Approximately \$3 million budget recommended for geophysics and several drill programs on our critical metals projects.
- **Implement new programs and drill targets for recently discovered gold, copper, nickel showing,**
 - Follow up on beryllium sources
- **All projects in good standing for 15 years.**

