







Q1 2023

Genesis PGM-Cu-Ni Project, Alaska, for Option

			
Pd	Pt	Cu	Ni

Project Highlights



- 100% owned by New Age Metals.
- Located 120 road kilometres (km) north of the city of Valdez, Alaska and 460 km south of Fairbanks. Within 3 km of the all-season paved Richardson highway and a high capacity electric power line.
- Reef mineralization is open to the west, east, north, and at depth.
- Drill ready PGM-Cu-Ni reef style target with 2.4 g/t Pd, 2.4 g/t Pt, 0.96% Ni and 0.58% Cu in surface samples.
- Mineralized reef identified in outcrop for 2,000 m along strike and a 40 m true thickness.
- Known PGM mineralization covers distance of 9 km across the prospect.
- Project is covered by 4,144 hectares of State of Alaska mining claims.
- 2018 NI 43-101 Technical Report available for review.
- 2021 Assessment Report available for review.
- An experienced technical team is available to continue the exploration activities.

Strategic Metals in North America

- Palladium, platinum, nickel and copper are all green metals and are all considered critical metals by the US government.
- Copper and nickel are key ingredients in battery technology and palladium and platinum have applications in the hydrogen economy.
- Supply and demand fundamentals for the project's metal suite have positive outlooks.
- Alaska has traditionally been a tier one mining jurisdiction and in 2018, mineral exports accounted for 36% of the state's export total. Minerals are Alaska's second-largest export commodity.

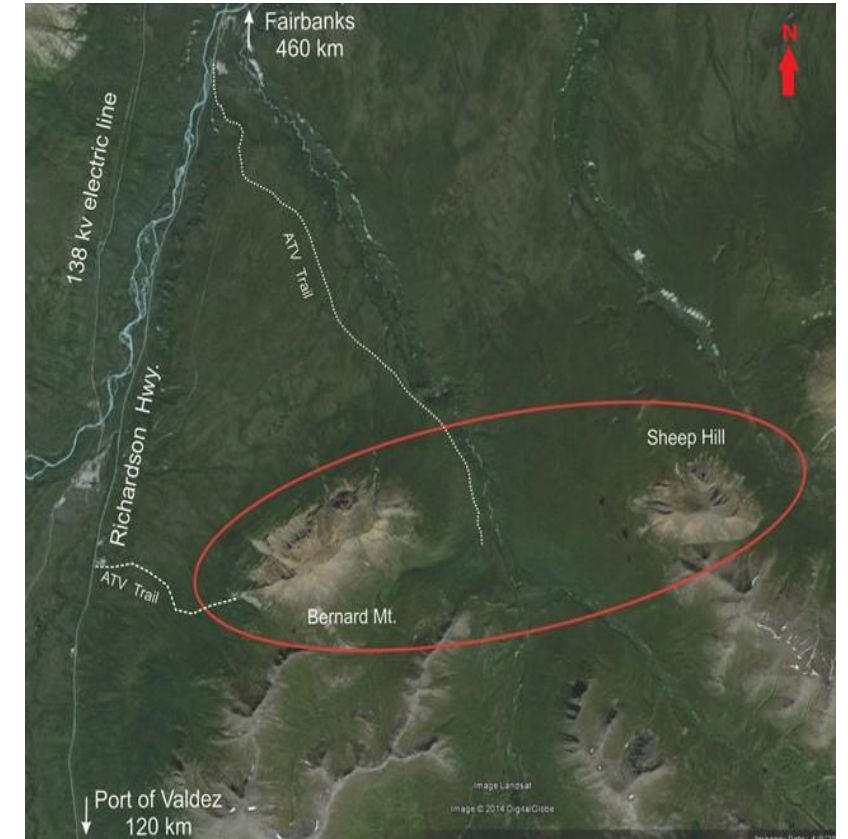


Project History



- In 2000, New Age Metals (formerly, Pacific North West Capital) acquired mining claims over the Tonsina ultramafic complex.
- An option/joint venture agreement was signed with Stillwater in the late 2000's. Due to Stillwater management changes, Stillwater dropped the project but did complete initial work.
- In 2012 New Age dropped the property due to market conditions.
- The State of Alaska Division of Geological and Geophysical Surveys (DGGS) flew helicopter-borne airborne magnetics and frequency-domain electromagnetics over the greater Genesis project area in 2014. In addition, DGGS also collected 114 rock samples from the Tonsina Ultramafic complex (TUC) as part of the agency's state-wide Strategic and Critical Minerals Initiative (Werdon, 2015).
- New Age Metals signed an agreement to re-acquire the Genesis Project on April 4, 2018.
- Past exploration has revealed presence of chromite-associated platinum and palladium mineralization and stratabound Ni-Cu-PGM mineralization within steeply dipping magmatic layers of the Sheep Hill portion of the Tonsina Ultramafic Complex.
- No historic drilling on the project.

Location



The Genesis property is located in south central Alaska, approximately 120 km northeast of the port city of Valdez and approximately 3 km east of the Richardson highway

The property is located between the Copper River and the Tonsina River

Work Completed to Date by New Age Metals



- 2018
 - Property agreement finalized.
 - NI 43-101 Technical Report completed.
- 2019
 - Interpretation of Advanced Spaceborne Thermal Emission and Reflection Radiometer (ASTER) and associated LANDSAT8 satellite data.
 - Interpretation of airborne magnetic and resistivity surveys previously flown by the State of Alaska Division of Geological and Geophysical Surveys.
 - Combining data from the two phases of work detailed above, indicated the total length of the stratabound PGM-Cu-Ni mineralization on Sheep Hill of at least 2,000 m and it is open under alluvial cover in both strike directions.
- 2020
 - No exploration program as a result of COVID-19.
- 2021
 - Field program consisting of surface sampling and mapping completed in Q4 2021.

Recommended Genesis Project Exploration Plan & Timeline

	Year 1	Year 2	Year 3	Year 4	Year 5
Drill target definition and identification (i.e., mapping, sampling, geophysics reinterpretation)					
Scout drilling and analysis ~2,500 metres					
Definition drilling and analysis ~5,000 metres					
Maiden Mineral Resource Estimate					
Engineering Studies					

Opportunity

The Company proposes to enter into an option / joint venture arrangement with a qualified third party to further develop the Genesis Project. An experienced technical team is available.



100% OWNED



3 KM FROM HIGHWAY & ELECTRIC
TRANSMISSION LINE



KNOWN PGM-Cu-Ni MINERALIZATION
COVERS 9 KM



SEEKING EXPLORATION AND
DEVELOPMENT OPTION/JV PARTNER



DRILL-READY PGM-Cu-Ni REEF STYLE
TARGET: 2.4 G/T PD, 2.4 G/T PT, 0.96%
NI AND 0.58% CU ON SURFACE